

# CSI FOR G20

DIGITAL DOSSIER

MATERA 29 GIUGNO/JUNE 2021





# CSI FOR G20



# WHO WE ARE

## THE CONSORTIUM

Half a century of industry history  
The Consortium for the Industrial Development of the Province of Matera (CSI) is a public economic body that operates in one of the most dynamic realities in the whole of Southern Italy. Thanks to its administrative, financial and accounting autonomy, the Csi operates as an entrepreneurial entity.

## THE ORIGINS

The Consortium for the industrial development of the province of Matera was founded on August 5, 1961, after the discovery of extensive methane deposits in the Basento Valley, in the province of Matera.

## THE FUTURE

It has a very lean operational structure that allows it to function as a one-stop shop for companies and to assist them both in the establishment phase and in the productive growth phase.

PRODUCTION AREAS

3

149

COMPANIES

HECTARES OF SURFACE

4889



# 14 REASONS TO INVEST HERE

1. People and culture
2. Green Energy/Economy
3. Digital Innovation **5G**
4. Research / University
5. Airfield Mattei / Zes Jonica
6. Aerospace
7. Tourism
8. Agroindustry
9. Food and wine
10. Cinema Location
11. 9 Industrial areas
12. Cultural Industry
13. Central Position
14. Direct relations with PA

14





# PEOPLE AND CULTURE

- GDP 11.8 billion euros
- GDP per capita € 20,696 (2nd southern region)
- Population equal to 567,118 resident
- Average age equal to 45.2 years
- 131 Municipalities with an average population of 3,407 resident





# GREEN ENERGY / ECONOMY



BASILICATA is  
ready for the  
Ecological  
green hub.  
(hydrogen)



# DIGITAL INNOVATION 5G



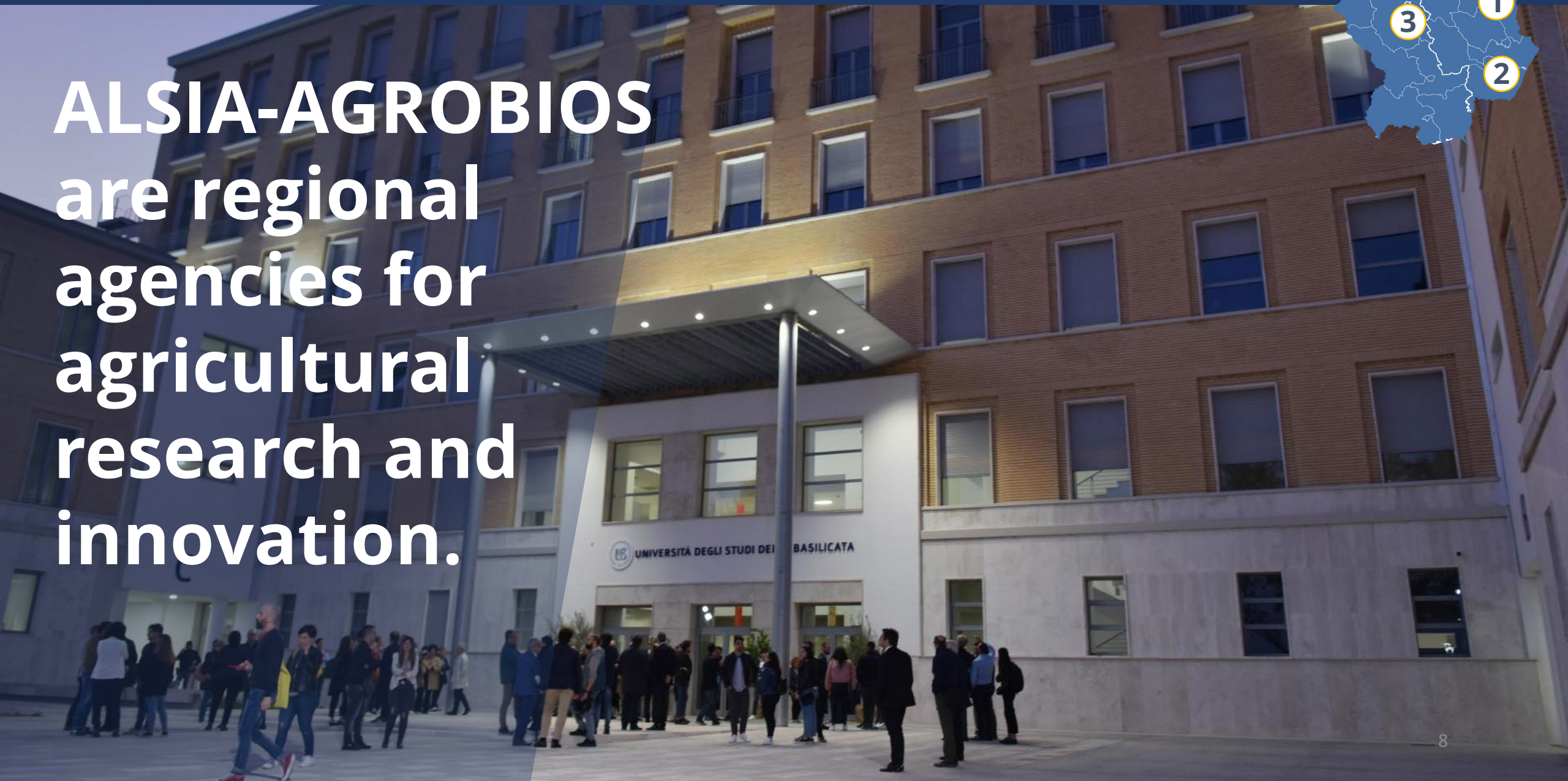
**MATERA** is  
one of the 5  
cities for 5G  
testing in  
Italy.







**ALSIA-AGROBIOS**  
are regional  
agencies for  
agricultural  
research and  
innovation.





# AIRFIELD MATTEI / ZES JONICA



The main  
**AIRFIELD** in  
**BASILICATA**  
for freight  
transport,  
logistic and  
tourism





# AEROSPACE

The main  
Center for  
Space Geodesy  
of the Italian  
Space Agency  
(ASI),  
is located in  
Matera





# TOURISM / SEA

40 Km of  
coastline on the  
Jonio sea and  
30 Km of  
coastline on the  
Tirreno Sea





# TUORISM / MOUNTAIN



**Pollino mountain**  
**2248m**  
**Piccole Dolomiti**  
**Lucane**  
**The new slow**  
**tourism**





# TOURISM / CULTURE / EXPERIENCE

1. Sassi di Matera
2. Venosa
3. Metaponto
4. The Angel fight
5. Parks





# AGROINDUSTRY



## 1. FRUITS

Candongia  
Strawberry,  
Oranges, Apricots,  
Peaches, Kiwi,  
Matera Strawberry.

## 2. VEGETABLES



# FOOD EXCELLENCES



1. Peperone Senise IGP (sweet pepper)
2. Matera's bread
3. Canestrato di Moliterno (cheese)
4. Melanzana di Rotonda (eggplant)
5. Olive Oil IGP





# WINE EXCELLENCES

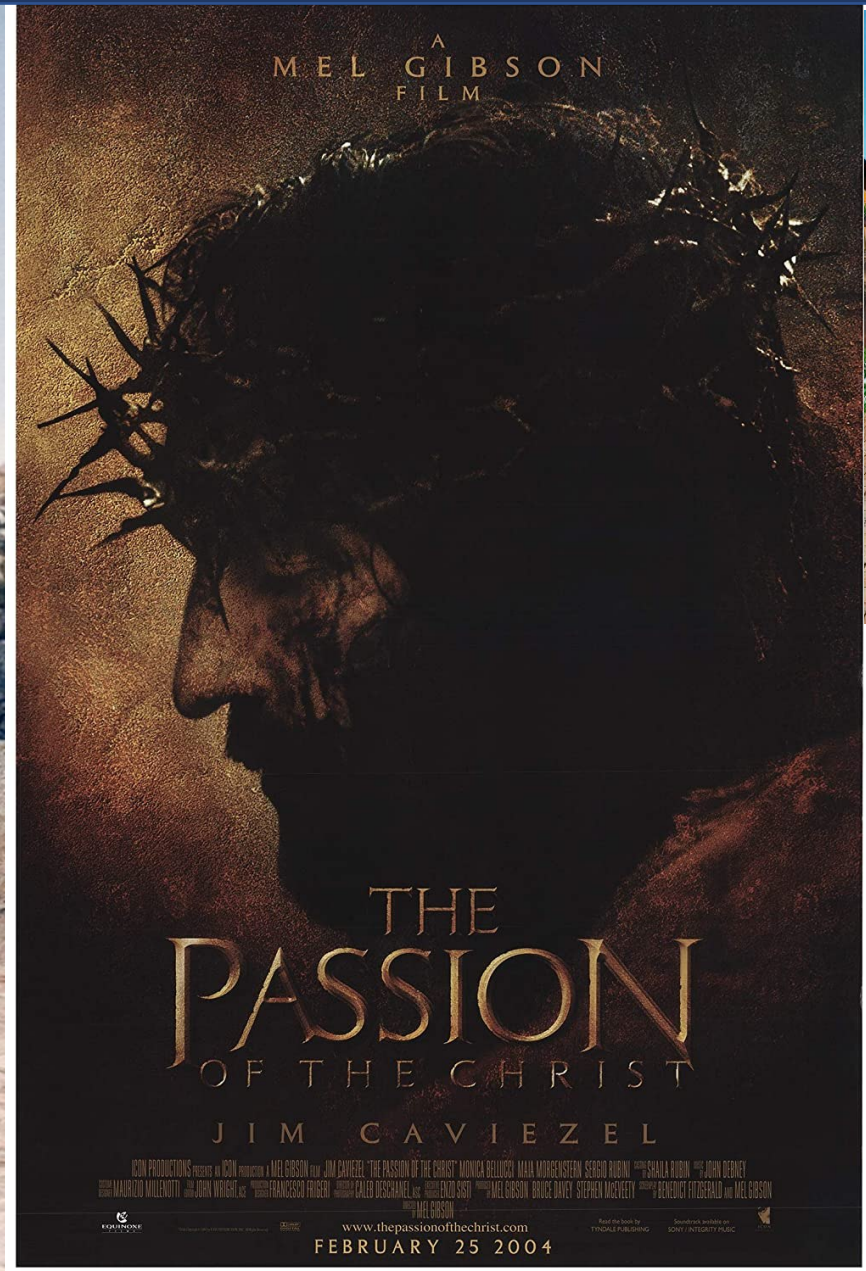


1. Aglianico Doc
2. Matera Doc
3. Grotтино di  
Roccanova  
Doc
4. Terre Alta Val  
d'Agri Doc
5. Basilicata IGT





# CINEMA LOCATION





# INDUSTRIAL AREAS

1. VAL BASENTO
2. JESCE MATERA
3. LA MARTELLA
4. MELFI
5. VALLE VITALBA
6. TITO SCALO
7. BALVANO
8. RAPONE
9. VIGGIANO





# MATERA ECOC 2019 – CULTURAL INDUSTRY



For every euro spent by a cultural tourist in Matera, € 1,85 were activated (+185%), for every euro invested directly in cultural productions there was a return of 2,00 € (+200); against an investment in the supply chain most closely linked to cultural production (51% of the resources invested), other economic sectors (49% of the resources) have been stimulated and introduced into the process of creating cultural value.







# CSI FOR G20